

# PLAN A

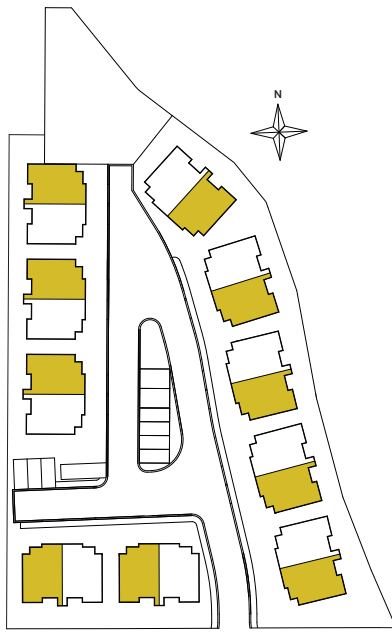
3 BED + 2.5 BATH

MAIN FLOOR: 656 SQ FT

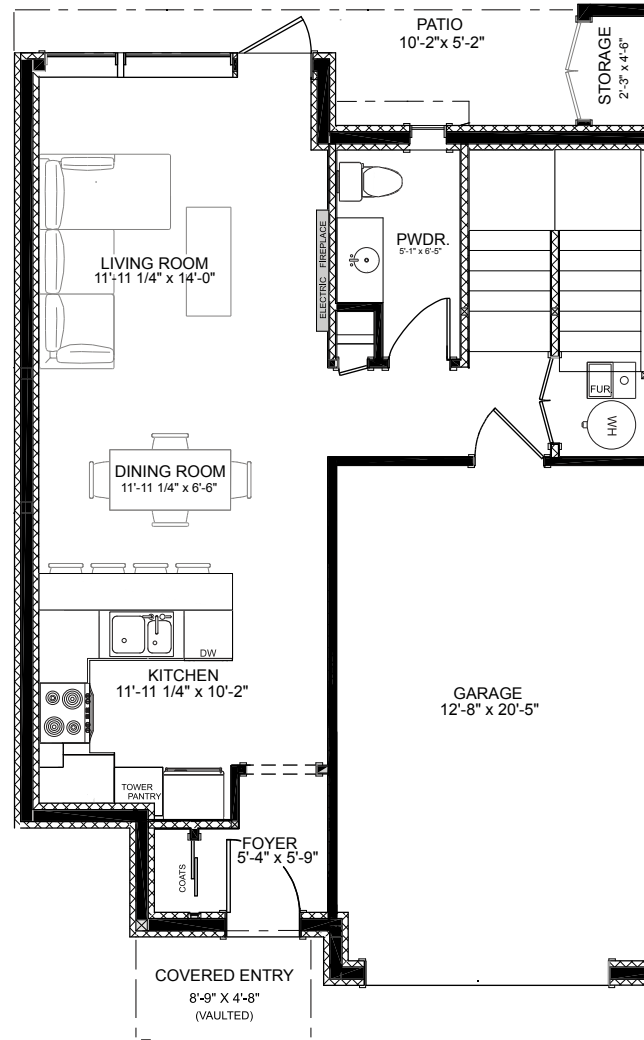
TOP FLOOR: 887 SQ FT

TOTAL: 1,543 SQ FT

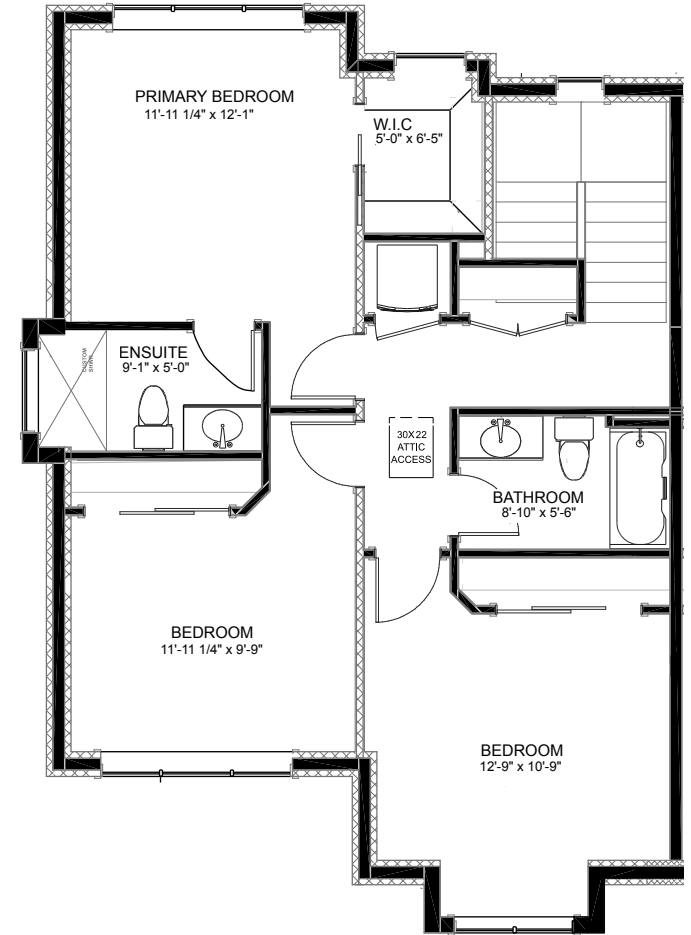
the  
**hills**  
AT GLENROSA



SALMON ROAD



MAIN FLOOR



TOP FLOOR

This is not an offering for sale. Any such offering can only be made with a Disclosure Statement. Pricing and offering is subject to change without notice. The developer reserves the right to make changes, modifications or substitutes to the building design, specifications and floorplans should they be necessary. Renderings, views, and layouts are for illustration purposes only. Sales powered by Pacific Real Estate & Angell Hasman and Associates Realty LTD.

# PLAN B

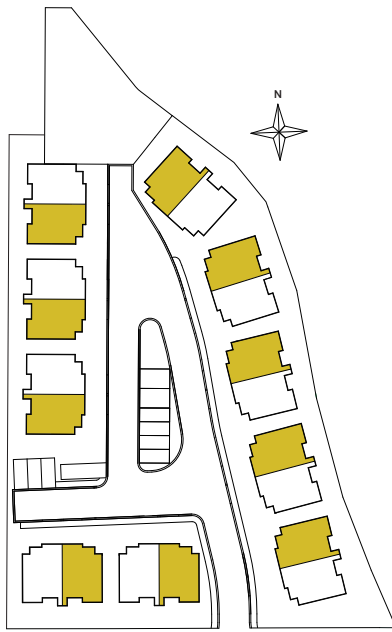
3 BED + 2.5 BATH

MAIN FLOOR: 656 SQ FT

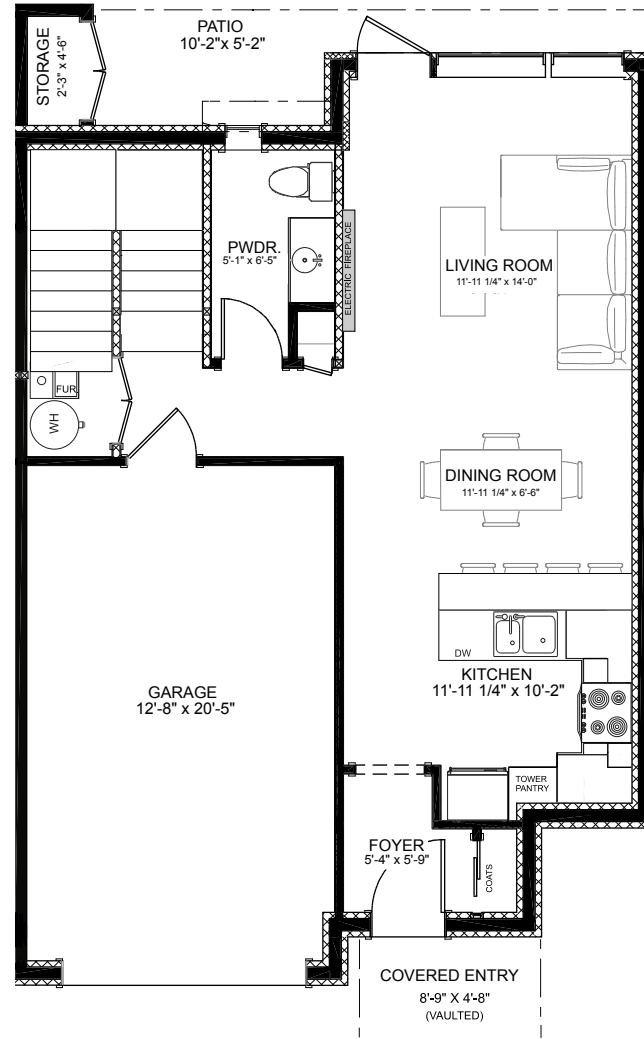
TOP FLOOR: 887 SQ FT

TOTAL: 1,543 SQ FT

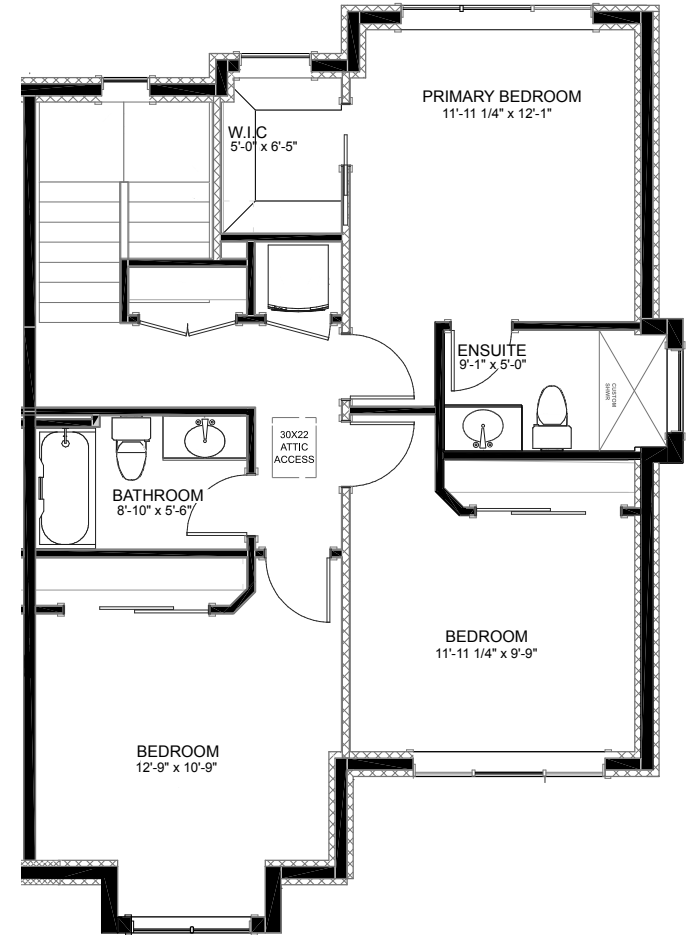
the  
**hills**  
AT GLENROSA



SALMON ROAD

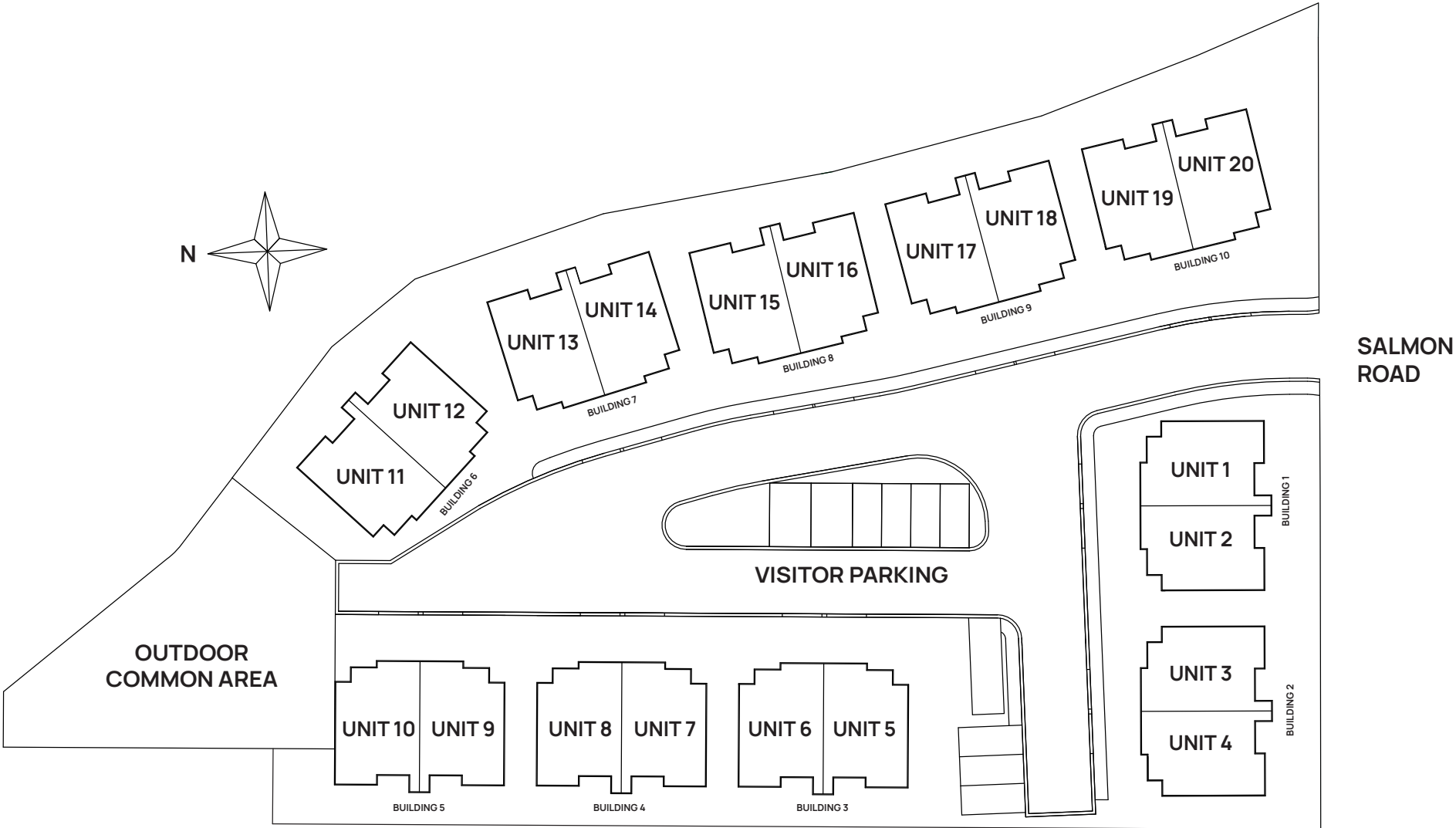


MAIN FLOOR



TOP FLOOR

# SITE MAP



This is not an offering for sale. Any such offering can only be made with a Disclosure Statement. Pricing and offering is subject to change without notice. The developer reserves the right to make changes, modifications or substitutes to the building design, specifications and floorplans should they be necessary. Renderings, views, and layouts are for illustration purposes only. Sales powered by Pacific Real Estate & Angell Hasman and Associates Realty LTD.